

## Intelligent Design for Easy Maintenance, Rugged Construction for Durable Performance.

### Easy engine inspection

Major components, such as the engine and air cleaner, are easily accessible for inspection and maintenance through the engine cover. An engine inspection cover behind the seat offers fast access to the engine's injection nozzles. A side cover on the right side of the cab provides quick and simple access to the battery, fuel tank and hydraulic tank.



### Protected bucket cylinder hoses

Cylinder hoses are routed within the arm for greater safety. This design vastly improves operator visibility, increases service life, and lowers repair costs.



### Boom cylinder protector

The new, thicker, steel-plated, V-shaped, boom-cylinder protector safeguards against accidental damage from attachments or other objects.



### Two-piece hose design

The innovative, two-piece, hydraulic hose design for the dozer reduces hose replacement time by 60% when compared to a one-piece hose design. What's more, this design virtually eliminates heavy labour from the actual hose replacement process.

### Control valve inspection

Located beneath the cabin floor, the control valve can be accessed by simply removing the steps by hand. When an involved repair is required, the steps and cover below the seat can all be removed by using standard tools.

## SPECIFICATIONS (U20-3<sup>U</sup>)

\*Rubber shoe type

Type		Variable track type	
Machine weight	Cabin	kg	2250
	Canopy	kg	2160
Bucket capacity, std. SAE/CECE	m <sup>3</sup>	0.066/0.056	
Bucket width	with side teeth	mm	450
	without side teeth	mm	400
Model		D1105-E2-BH-12	
Type		Water-cooled, diesel engine E-TVCS (Economic, ecological type)	
Engine	Output ISO9249	PS/rpm	19/2200
		kW/rpm	14/2200
Number of cylinders		3	
Bore × Stroke		mm	72 × 78.4
Displacement		cc	1123
Overall length	mm	3850	
Overall height	Cabin	mm	2360
	Canopy	mm	2380
Swivelling speed	rpm	9.6	
Rubber shoe width	mm	250	
Tumbler distance	mm	1470	
Dozer size (width × height)		1300/1500 × 290	
P1, P2		Variable displacement pump	
Hydraulic pumps	Flow rate	ℓ/min	23 + 23
	Hydraulic pressure	MPa(kgf/cm <sup>2</sup> )	21.6 (220.0)
	P3	Gear type	
	Flow rate	ℓ/min	12.8
Max. digging force	Arm	kN (kgf)	13.2 (1350)
	Bucket	kN (kgf)	18.4 (1880)
Boom swing angle (left/right)		deg 75/55	
Auxiliary circuit	Flow rate	ℓ/min	35.8
	Hydraulic pressure	MPa(kgf/cm <sup>2</sup> )	21.6 (210.0)
Hydraulic reservoir	ℓ	22	
Fuel tank capacity	ℓ	28	
Max. travelling speed	Low	km/h	2.2
	High	km/h	4.2
Ground contact pressure	Cabin	kPa(kgf/cm <sup>2</sup> )	27.2 (0.28)
	Canopy	kPa(kgf/cm <sup>2</sup> )	25.7 (0.26)
Ground clearance	mm	160	

## LIFTING CAPACITY (U20-3<sup>U</sup>)

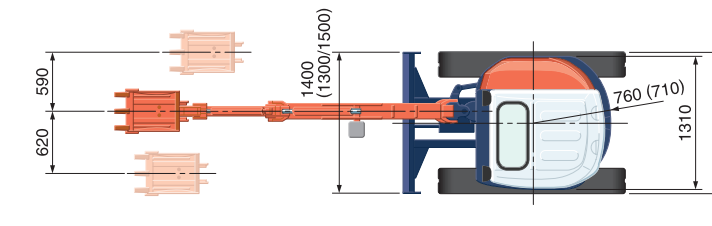
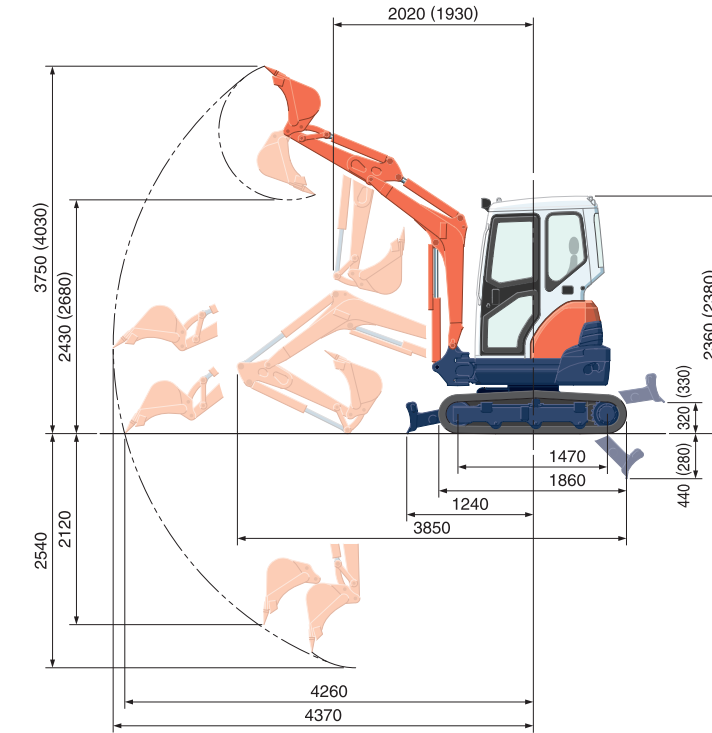
With variable track type: 1500mm [1300mm]

Lift Point Height	Lifting point radius (2.5m)						Lifting point radius (3.5m)		
	Over-front			Over-side	Over-front		Over-side	Over-side	
	Blade Down	Blade UP	Blade Down		Blade UP				
3m	4.4 (0.45)	4.4 (0.45)	4.4 (0.45) [4.4 (0.45)]	—	—	—	—	—	
2m	4.6 (0.47)	4.6 (0.47)	4.6 (0.47) [4.4 (0.45)]	—	—	—	—	—	
1m	6.8 (0.69)	5.4 (0.55)	5.2 (0.53) [4.1 (0.42)]	4.9 (0.50)	3.2 (0.33)	3.2 (0.32) [2.5 (0.26)]	—	—	
0m	8.3 (0.84)	5.1 (0.52)	5.0 (0.51) [3.9 (0.40)]	5.1 (0.52)	3.1 (0.32)	3.1 (0.32) [2.4 (0.25)]	—	—	

Please note:

- \* The lifting capacities are based on ISO 10567 and do not exceed 75% of the static tilt load of the machine or 87% of the hydraulic lifting capacity of the machine.
- \* The excavator bucket, hook, sling and other lifting accessories are not included on this table.

## WORKING RANGE (U20-3<sup>U</sup>)



( ): canopy  
Unit: mm

\* Working ranges are with Kubota standard bucket, without quick coupler.  
\* Specifications are subject to change without notice for purpose of improvement.

## SPECIFICATIONS (U25-3<sup>U</sup>)

\*Rubber shoe type

Machine weight		kg	
Machine weight	Cabin	kg	2550
	Canopy	kg	2470
Bucket capacity, std. SAE/CECE	m <sup>3</sup>	0.080/0.064	
Bucket width	with side teeth	mm	500
	without side teeth	mm	450
Model		D1105-E2-BH-13	
Type		Water-cooled, diesel engine E-TVCS (Economic, ecological type)	
Engine	Output ISO9249	PS/rpm	21/2400
		kW/rpm	15.5/2400
Number of cylinders		3	
Bore × Stroke		mm	72 × 78.4
Displacement		cc	1123
Overall length	mm	4100	
Overall height	Cabin	mm	2400
	Canopy	mm	2420
Swivelling speed	rpm	9.8	
Rubber shoe width	mm	300	
Tumbler distance	mm	1560	
Dozer size (width × height)		1500 × 290	
P1, P2		Variable displacement pump	
Hydraulic pumps	Flow rate	ℓ/min	28.8 + 28.8
	Hydraulic pressure	MPa(kgf/cm <sup>2</sup> )	21.6 (220.0)
	P3	Gear type	
	Flow rate	ℓ/min	19.2
Max. digging force	Arm	kN (kgf)	14.4 (1465)
	Bucket	kN (kgf)	21.6 (2200)
Boom swing angle (left/right)		deg 75/55	
Auxiliary circuit	Flow rate	ℓ/min	48
	Hydraulic pressure	MPa(kgf/cm <sup>2</sup> )	21.6 (210.0)
Hydraulic reservoir	ℓ	22	
Fuel tank capacity	ℓ	28	
Max. travelling speed	Low	km/h	2.5
	High	km/h	4.5
Ground contact pressure	Cabin	kPa(kgf/cm <sup>2</sup> )	24.0 (0.24)
	Canopy	kPa(kgf/cm <sup>2</sup> )	22.9 (0.23)
Ground clearance	mm	300	

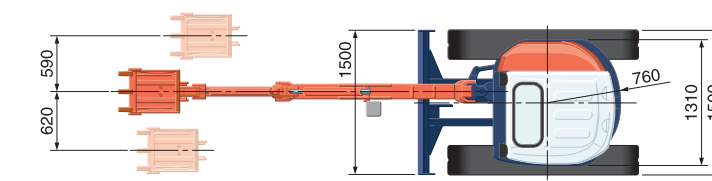
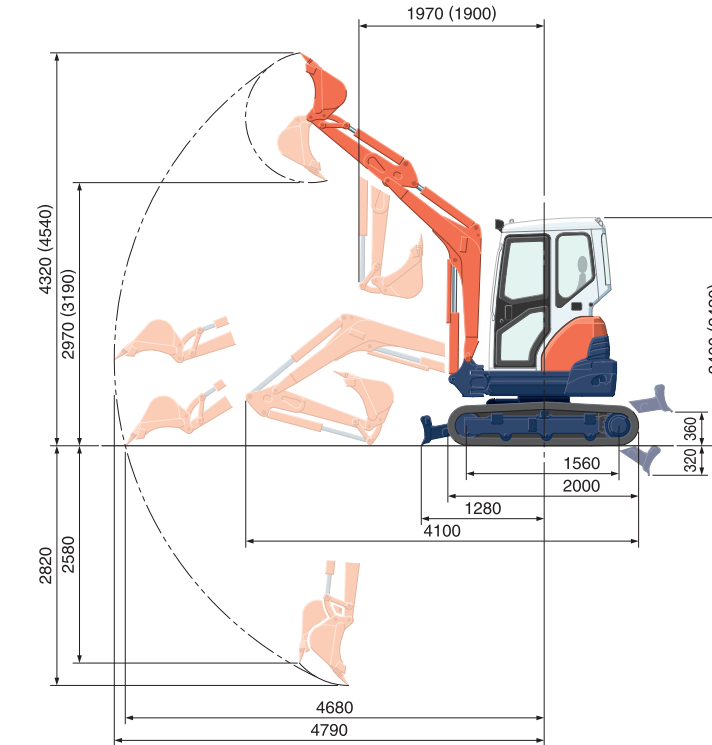
## LIFTING CAPACITY (U25-3<sup>U</sup>)

Lift Point Height	Lifting point radius (3m)			Lifting point radius (4m)		
	Over-front		Over-side	Over-front		Over-side
	Blade Down	Blade UP		Blade Down	Blade UP	
3m	4.4 (0.45)	4.4 (0.45)	4.4 (0.45)	—	—	—
2m	4.8 (0.49)	4.8 (0.49)	4.7 (0.47)	—	—	—
1m	6.3 (0.64)	5.3 (0.54)	4.4 (0.45)	4.8 (0.49)	3.5 (0.35)	2.9 (0.30)
0m	7.3 (0.74)	5.1 (0.52)	4.2 (0.43)	—	—	—

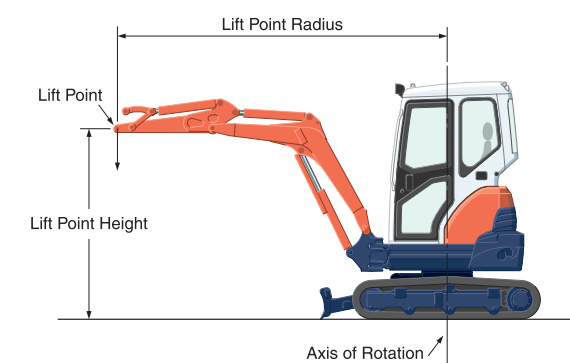
Please note:

- \* The lifting capacities are based on ISO 10567 and do not exceed 75% of the static tilt load of the machine or 87% of the hydraulic lifting capacity of the machine.
- \* The excavator bucket, hook, sling and other lifting accessories are not included on this table.

## WORKING RANGE (U25-3<sup>U</sup>)



( ): canopy  
Unit: mm



\* Working ranges are with Kubota standard bucket, without quick coupler.  
\* Specifications are subject to change without notice for purpose of improvement.